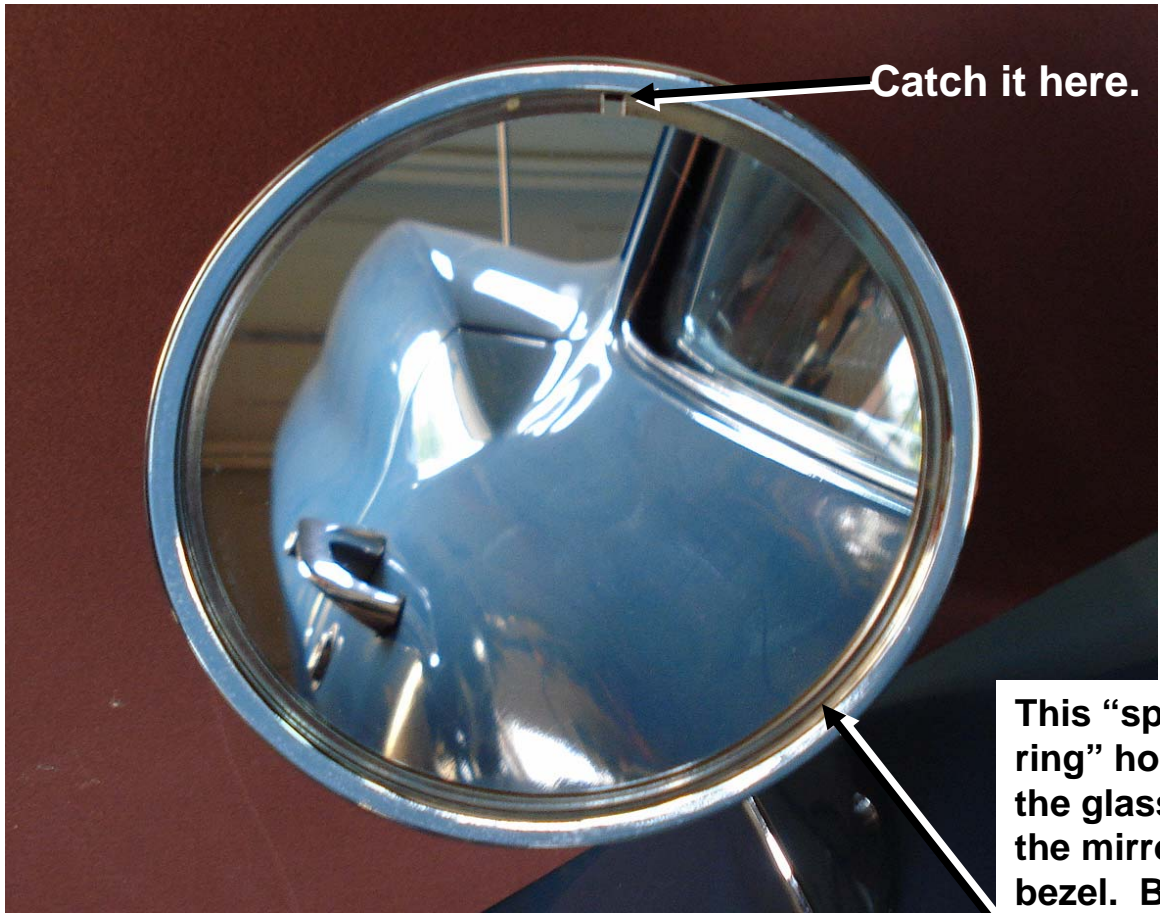


Tightening a loose exterior rear-view mirror



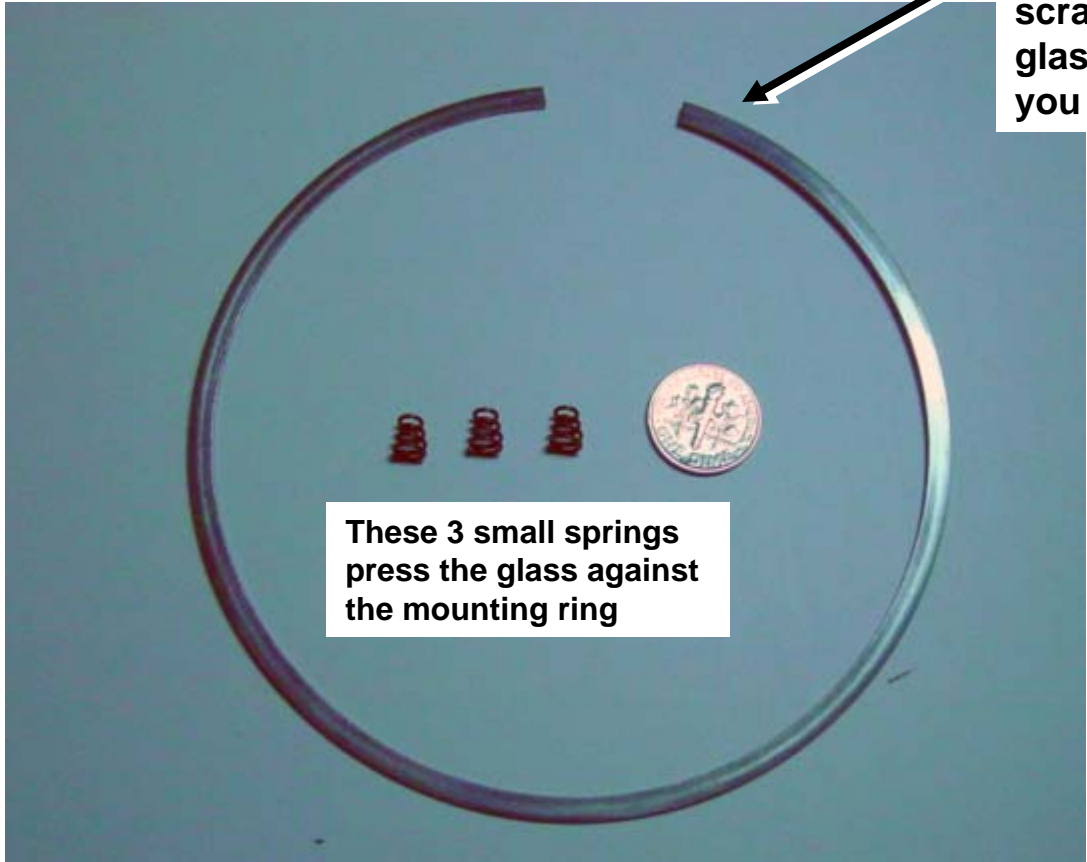
The repro mirror on my 65 did not hold up very long before it started to wobble and wouldn't hold a fixed position. Here's how fixed the problem.

Dave Zuberer

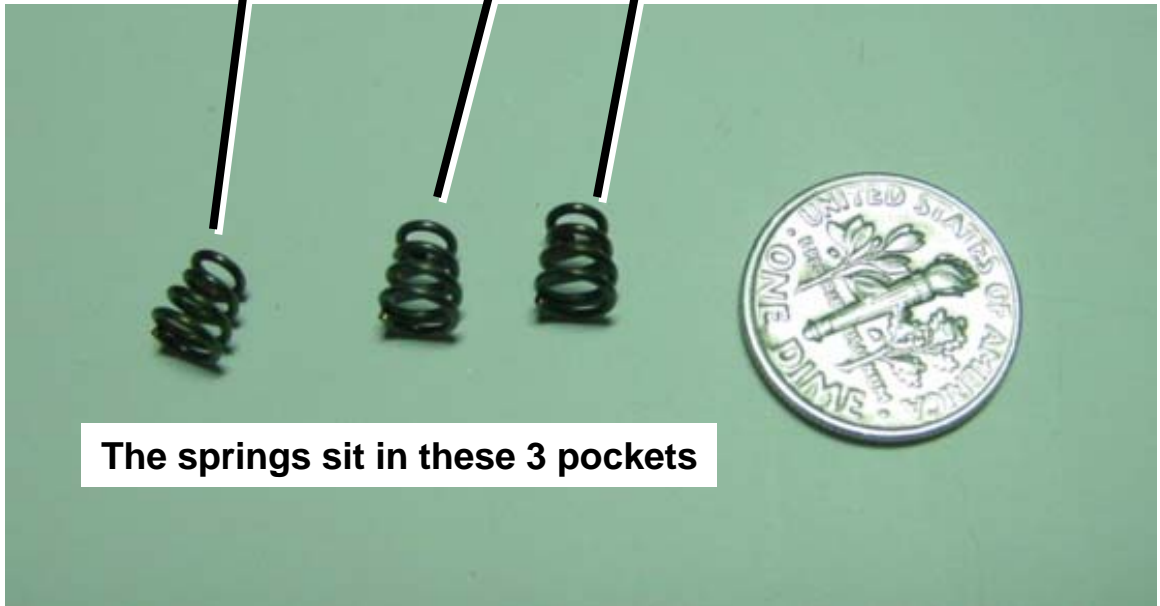
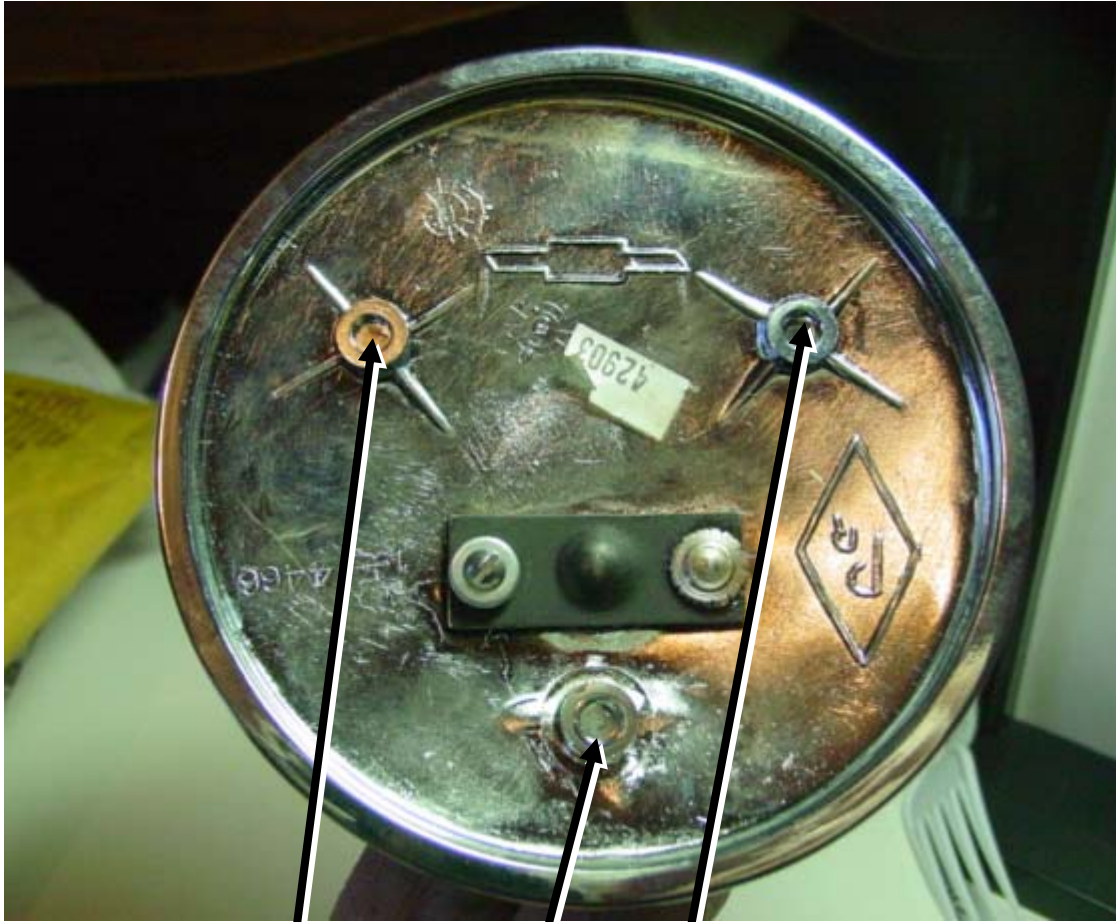


Catch it here.

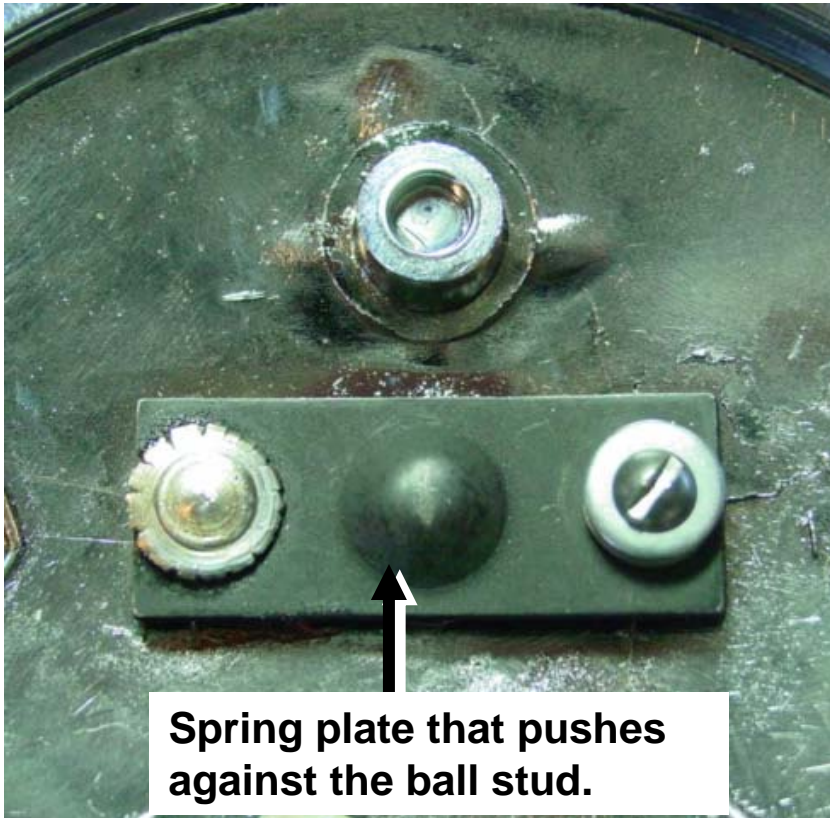
This "spring ring" holds the glass in the mirror bezel. Be careful not to scratch the glass when you pry it out.



These 3 small springs press the glass against the mounting ring



The springs sit in these 3 pockets



Spring plate that pushes against the ball stud.

This spring plate presses against the pivot ball in the back of the housing. Mine was loose because the peening on the rivet had let loose.

I ground off the peened rivet flush with the plate and drilled and tapped the stud to accept a small screw. I had to file the screw head down (not shown here) to keep it from interfering with the mirror glass.



The mirror has been good and tight since the repair.