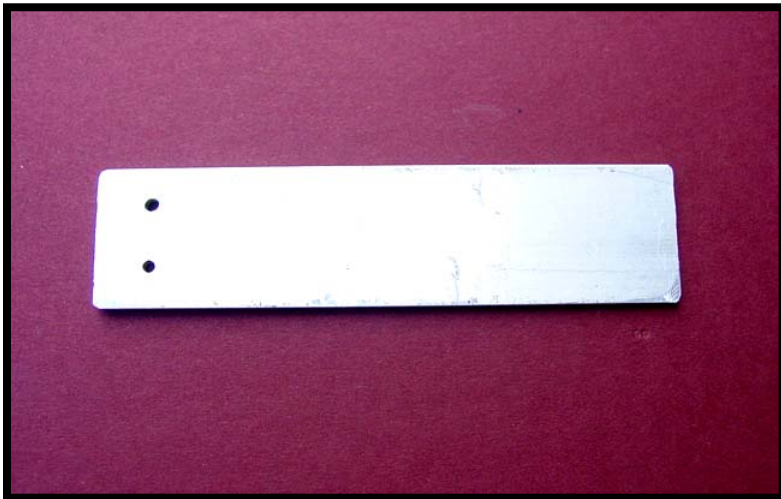
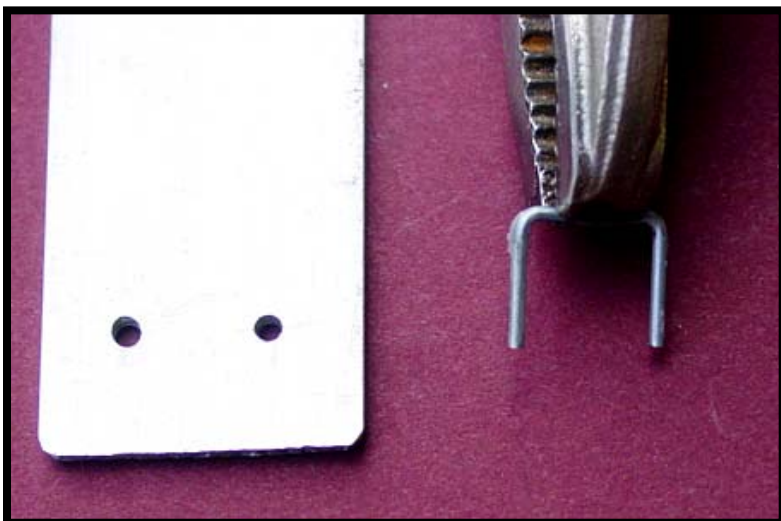


# A method for installing staples in fender skirts, splash shields, etc. Dave Zuberer



Jig for drilling splash shields fender skirts, etc. Made from 1" x 1/16<sup>th</sup> aluminum bar.



Small vice grip is good for grabbing onto the staples. I prefer the steel staples wherever they can be used, The SS staples are very hard to bend!

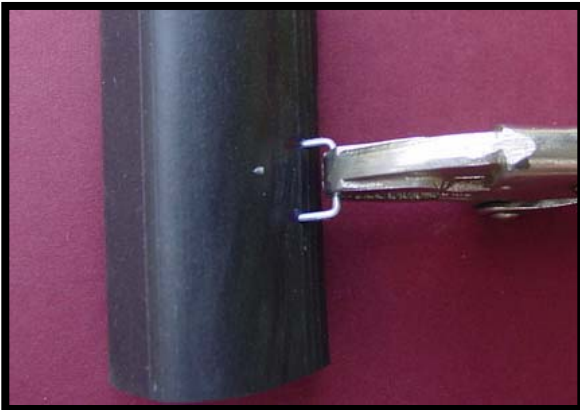


Splash shield drilled after marking hole locations with a thin awl and punching to mark drill start.





Load staple into vice grip with a good firm hold!



I mark the rubber with a ballpoint pen or paint marker where the staples will be punched thru the rubber. On A-arm flaps, drill small holes for the staples

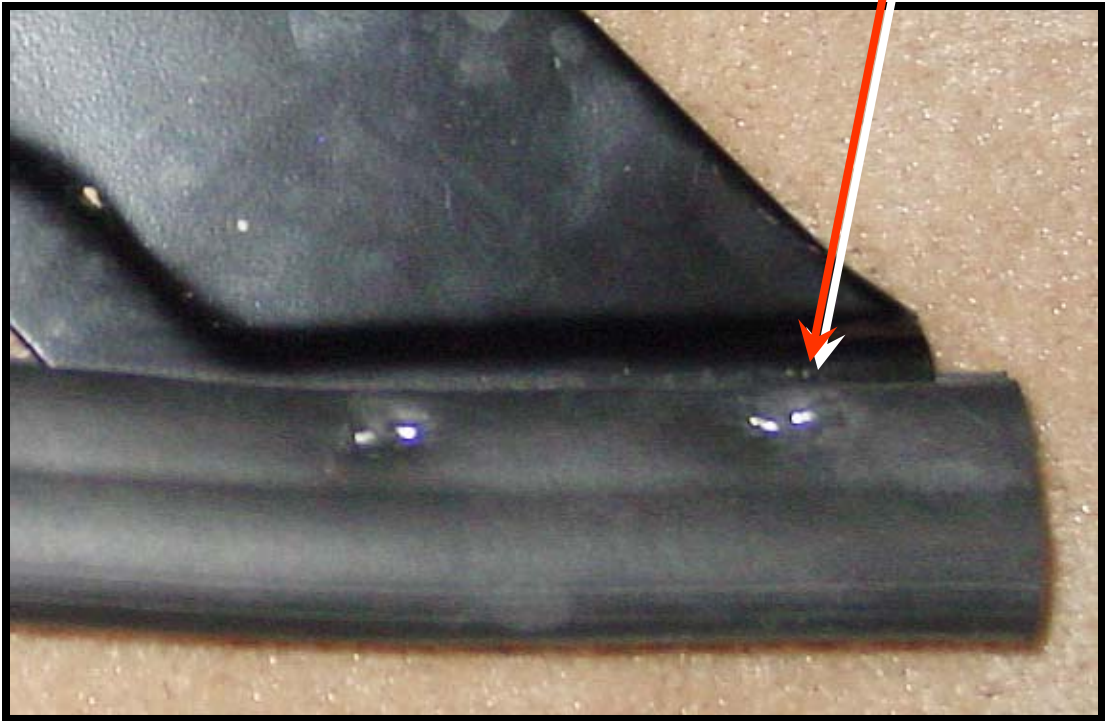


Here's a staple through the top side of the splash-shield rubber seal. Next step is to put the prongs thru the holes in the shield and then take the round-jawed pliers below, push them down around one prong, grab the prong and pull up firmly while you twist the staple over. Repeat for the other prong. This is usually the tricky part. Patience!





Finished staples top and bottom





I use a pair of pliers that I grooved with a Dremel cutoff wheel to aid in clasping staples around the bending jig shown below.



With a helper (usually my better half) holding the staple on the other side of the fender well, I place the jig at left up against the fiberglass and crimp the staple legs around the jig using the pliers above. It starts the bend which I finish up with needle nose pliers or by pushing the staple leg down with a screw driver.

