

*1st Tech article*

2012

by Mike McCagh

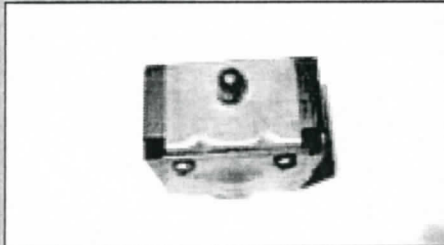
Editor's Note: This is the first in a series of technical tips for those restoring '56 C-1 cars.

## Folding Top Cover (Lid) Safety Switch

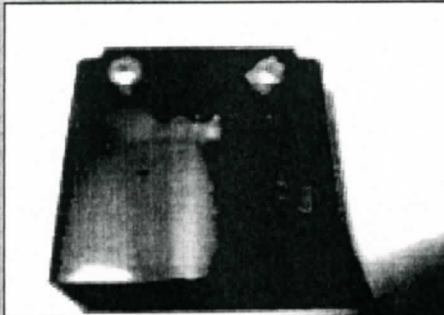
**Photo 1:** Folding top cover (lid) safety switch. This switch mounts atop the glove box assembly and prevents operation of the hydraulic pump with the lid (cover) in the latched position.

**Photo 2:** View of the rear of the switch in the installed position.

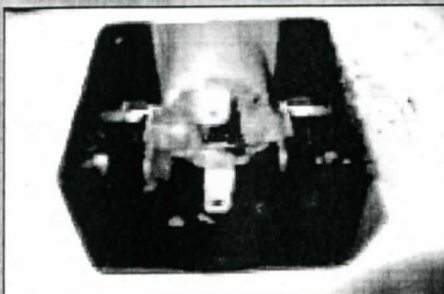
**Photo 3:** Notice that there are 4 terminals incorporated in this switch. Later photos of the deck lid safety switch will demonstrate that switch has but 2 terminals. See page 13 of the Corvette Service Operations Body manual.



1



2



3

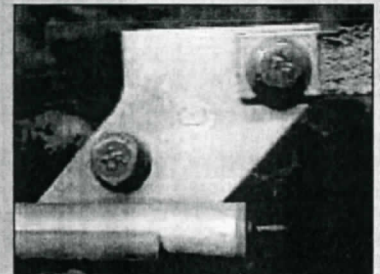
## Throttle Assembly

The pedal rod is painted semi-gloss black.

**Photo 1:** The throttle lever arm and the throttle pivot piece are cad-plated and probably had blackout overspray. The braided copper ground strap mounts to the outboard bolt fastening the entire assembly to the firewall and it and its neighbor are "TR" logo'd with flat and lock washers.

**Photo 2:** The bolt securing the throttle lever arm to the pedal rod is "UR" logo'd and its head faces the firewall while its nut, lock and flat washers face the radiator. The pivot point is stamped with a "C." The nylon bushings are yellow in color.

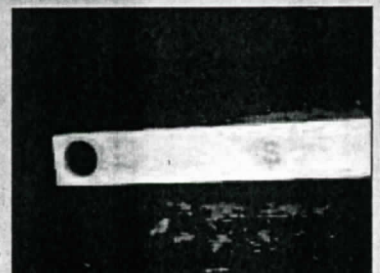
**Photo 3:** There is an "S" stamped in the throttle lever arm.



1



2



3